

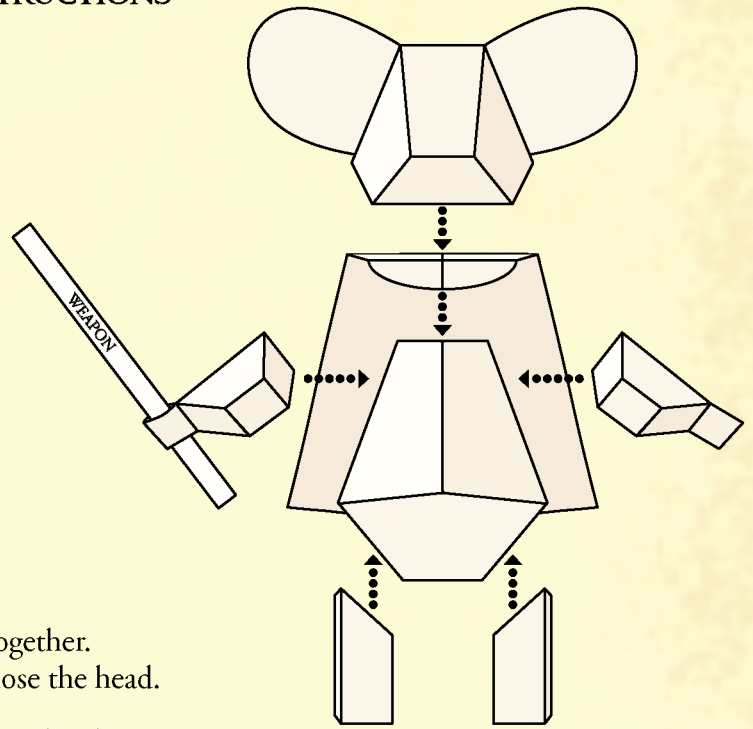
MOUSE GUARD

PAPER TOY

BASIC INSTRUCTIONS

GETTING STARTED

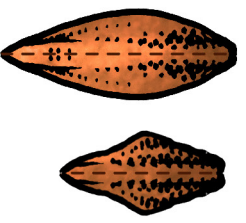
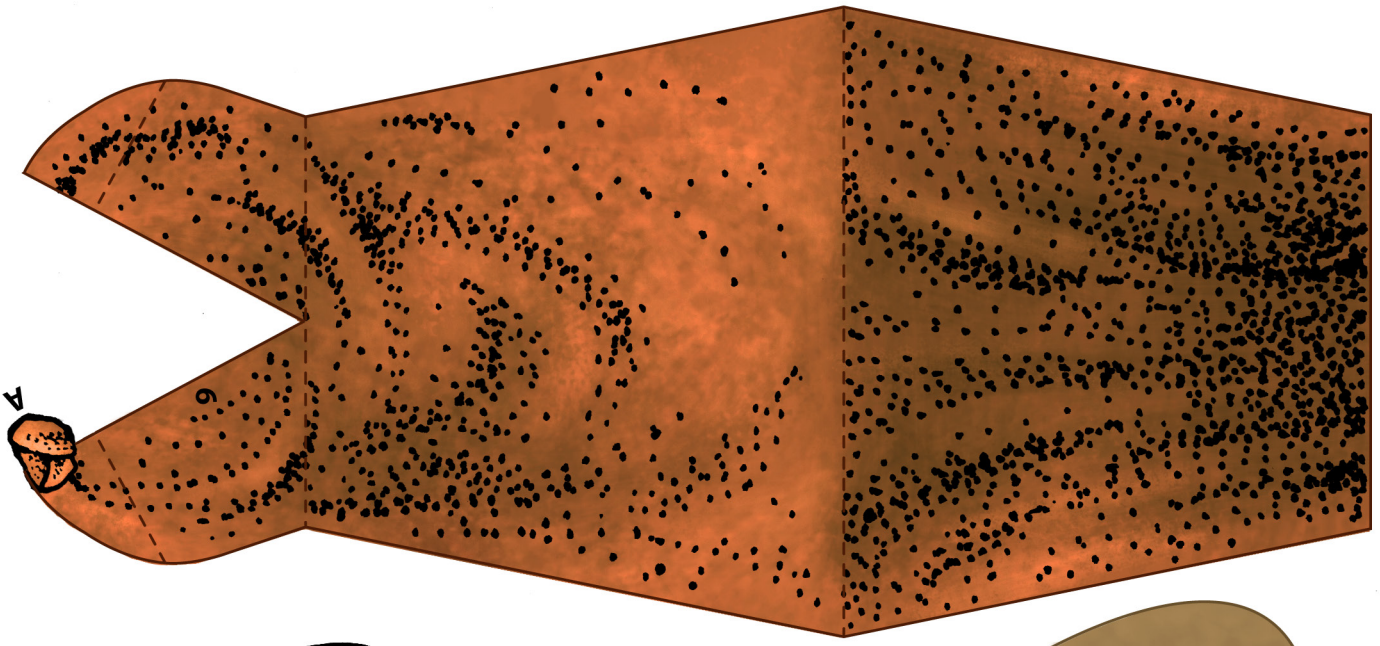
- Print out the template. For best results print on matte photo paper or cardstock.
- Carefully cut out all nine pieces. An X-acto knife works best for this so be sure to ask an adult for help.
- Fold along the dotted lines. **Tip:** For crisp and clean folds, use your X-acto and a ruler to lightly score along the dotted lines prior to folding.
- Apply a thin layer of white glue or rubber cement to the tabs when assembling. After gluing each tab, hold down for a few seconds allowing glue to dry.



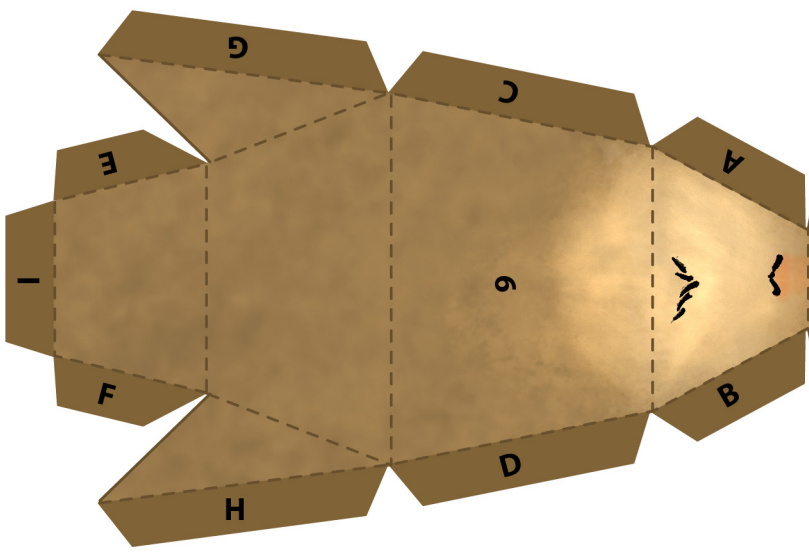
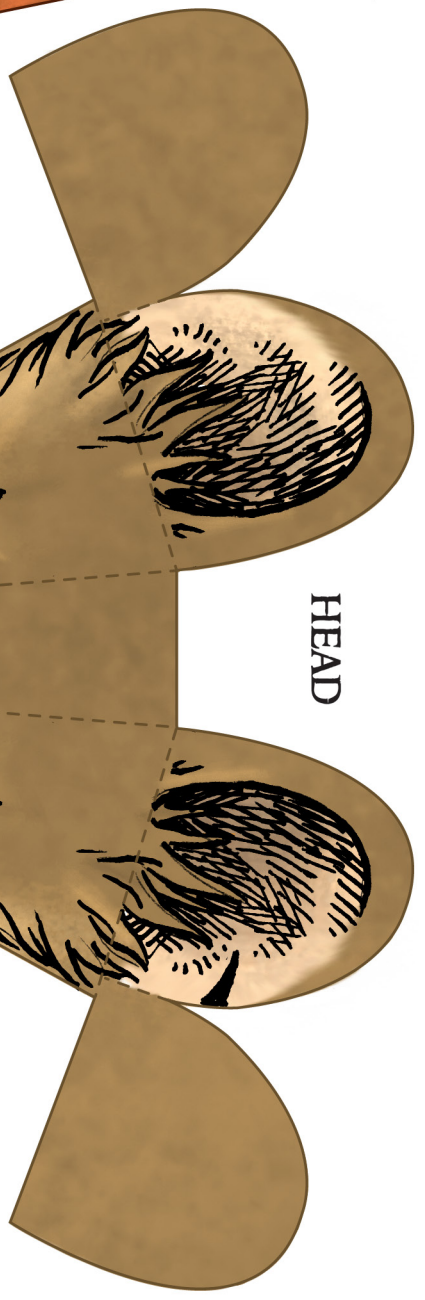
INSTRUCTIONS

1. **HEAD:** Fold and glue the front and back of the ears together. Assemble by gluing tabs A - I in alphabetical order to close the head.
2. **BODY:** Assemble body by gluing tabs A - O in alphabetical order.
3. **CLOAK:** Fold and glue to the front and back of the cloak together. Glue tab A to close the neck of the cloak. You can curl the bottom flap of the cloak by gently wrapping the pointed ends around a pencil.
4. **WEAPON:** Fold and glue the front and back of the weapon together. Finish by trimming off the excess border around the weapon.
5. **RIGHT ARM:** Apply glue to the white side of the paper on the front and back of the right paw. Place the weapon handle between the fold of the paw and press the two halves together. Make sure the weapon is facing up. Assemble the right arm by gluing tabs A - D in alphabetical order. Close up the right paw by gluing the final flap over top of the tabs marked E, F, and G.
6. **LEFT ARM:** Fold and glue the front and back of the left paw together. Assemble the left arm by gluing tabs A - D in alphabetical order. Close up the left paw by gluing the final flap over top of the tabs marked E, F, and G.
7. **LEGS:** Assemble the legs by gluing tabs A and B in alphabetical order. Place the back flap of the legs over top of the tabs marked C and D. Close up the legs by gluing the final flap over top of the tabs marked E and F.
8. **TAIL:** Fold and glue the front and back of the tail together. Finish by trimming off the excess border around the tail. You can curl the tail by gently wrapping the thinner end around a pencil.
9. **ASSEMBLE THE BODY:** Allow time for the pieces to dry before you begin. Apply glue over numbered areas 1 - 5 on each piece and attach to matching numbers on the body. Apply glue to the white bottom of the cloak neck and place it over the number "6" on the top of the body. Next, apply glue over the number "6" on the bottom of the head and place the head on the top of the cloak and body that you just assembled. Your Mouse Guard paper toy is now complete!

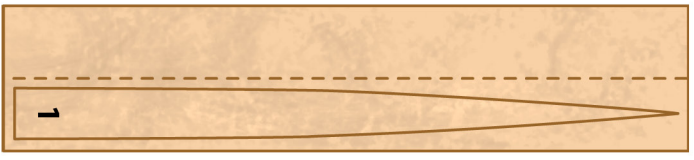
CLOAK



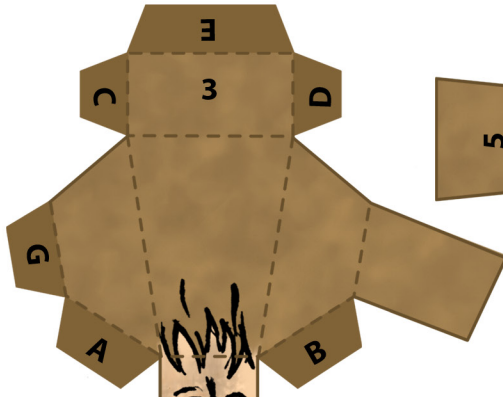
HEAD



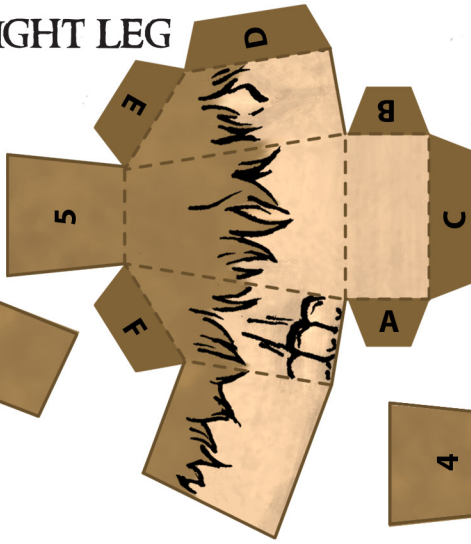
TAIL



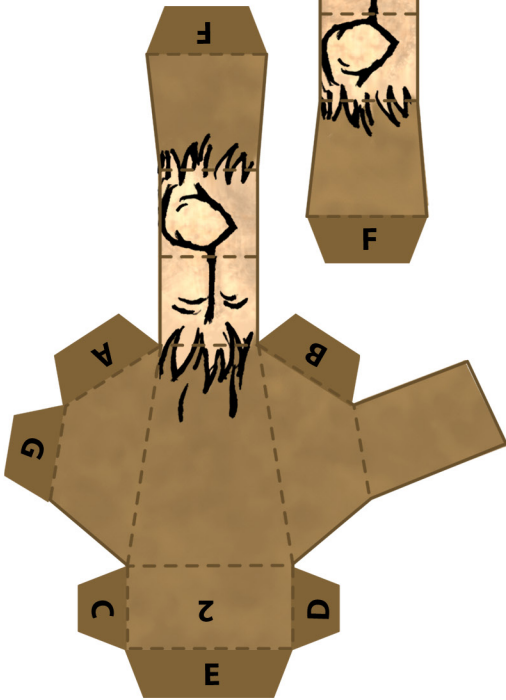
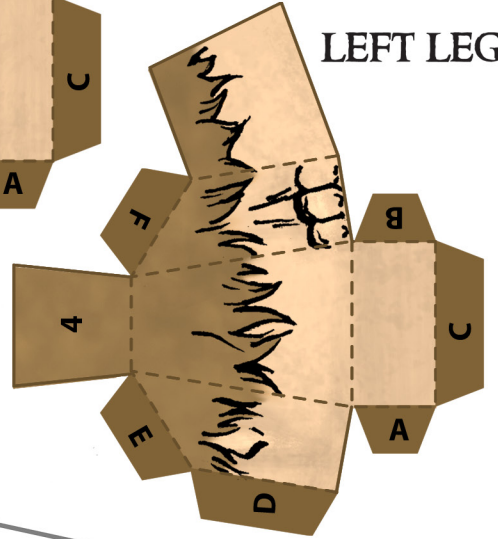
LEFT ARM



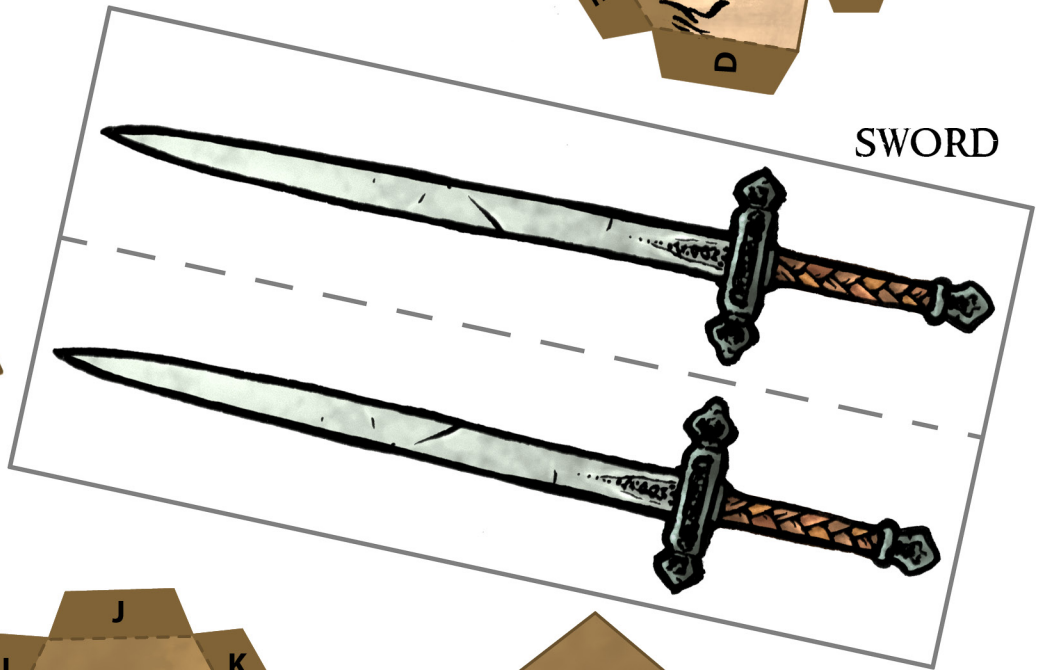
RIGHT LEG



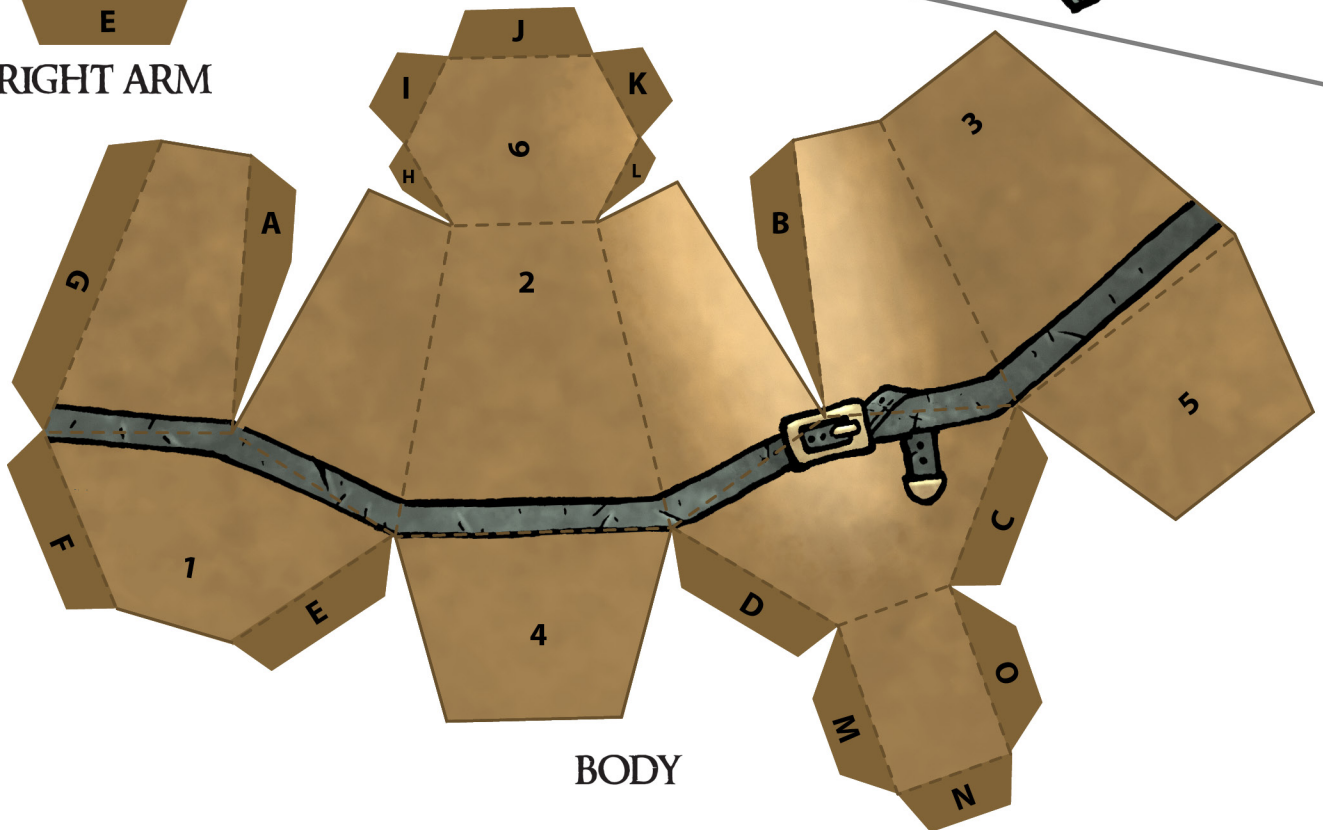
LEFT LEG



RIGHT ARM



SWORD



BODY